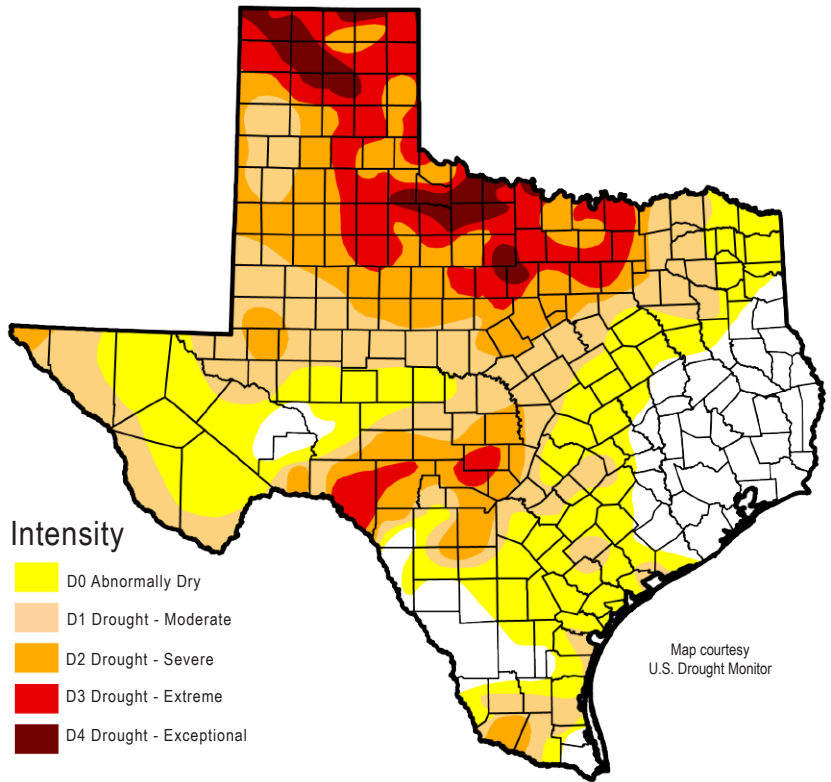


DROUGHT CONDITIONS

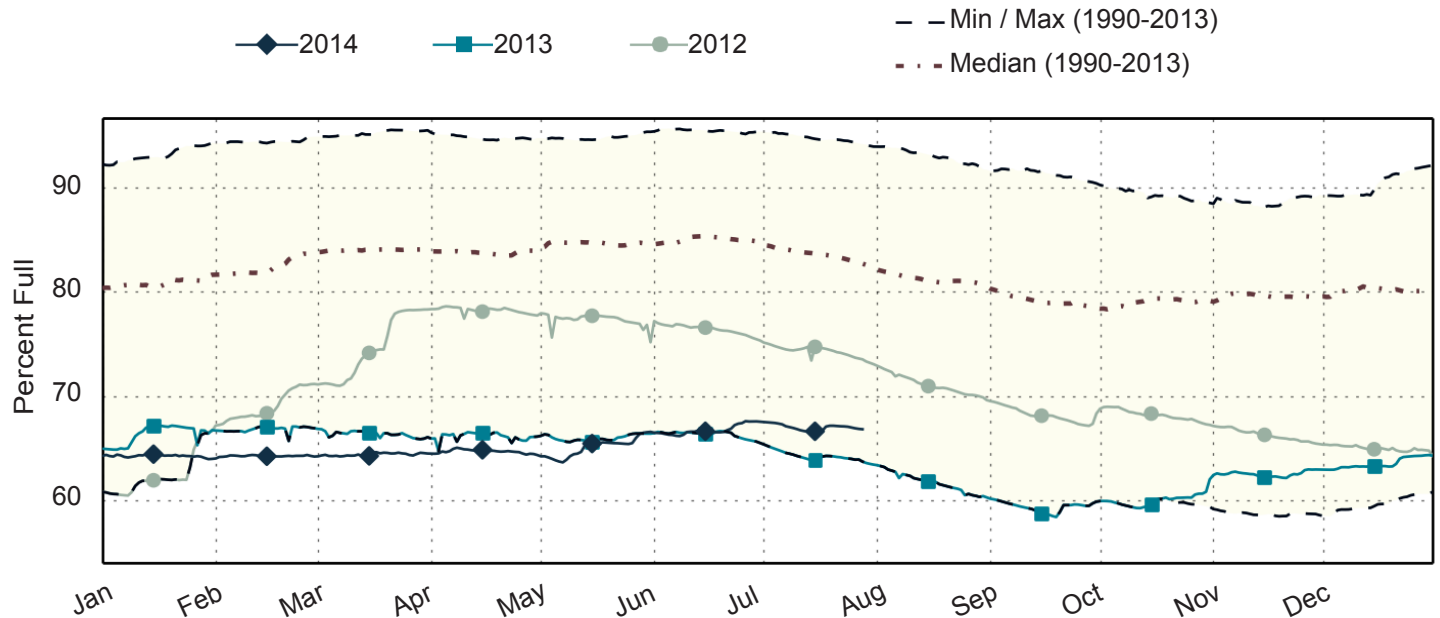
Rain continues to improve drought conditions, with the amount of the state in drought down 5 percentage points to 58 percent. The hardest hit parts of the state (Panhandle and Wichita Falls areas) have seen much needed improvement. Despite the rain, statewide reservoir storage remained relatively flat, up 120,000 acre-feet or 0.4 percentage points.

Drought statistics

- 58% of state currently in moderate to exceptional drought
- 63% a week ago
- 69% three months ago
- 93% a year ago



STATEWIDE RESERVOIR LEVELS



Statewide reservoir levels have been relatively flat for the past four weeks; however, given that levels typically go down this time of year, even flat levels are good levels!

Get more drought information on TWDB's website and social media accounts!

www.twdb.texas.gov



www.facebook.com/twdbboard



@twdb

Katherine Thigpen, Governmental Relations | katherine.thigpen@twdb.texas.gov | 512.463.1667