

# Water Weekly

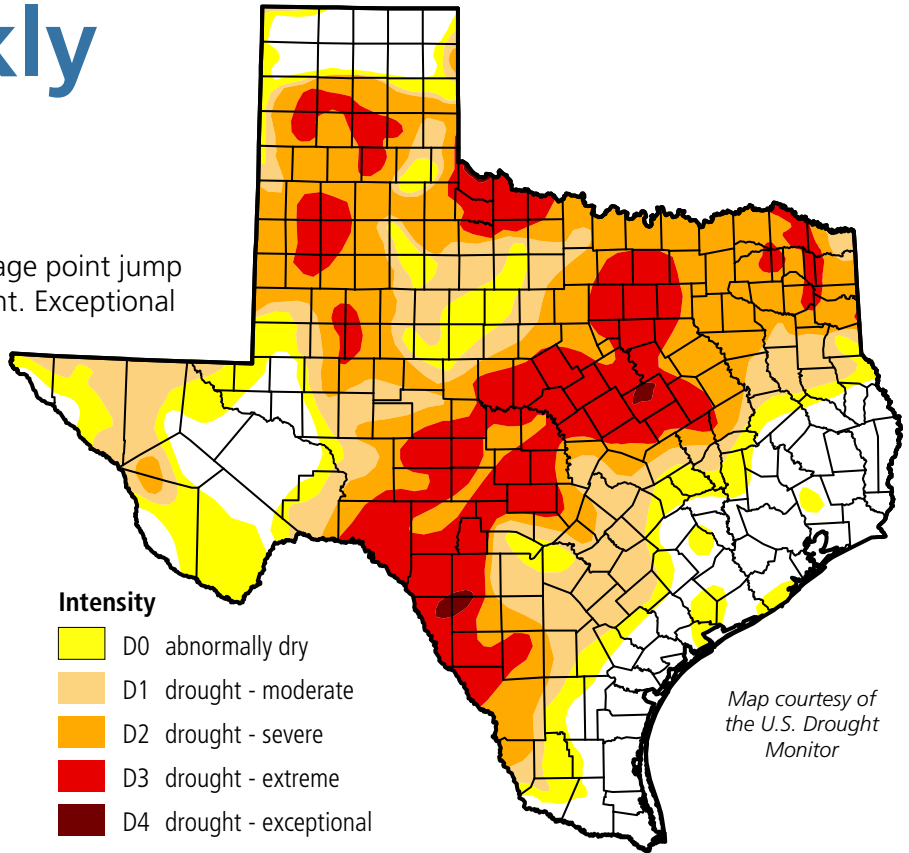
For the week of 08/13/18

## Water conditions

The latest drought map shows a 5 percentage point jump in the area of the state impacted by drought. Exceptional drought reappeared in the state for the first time since early July. Note: this map reflects conditions as of August 7, 2018.

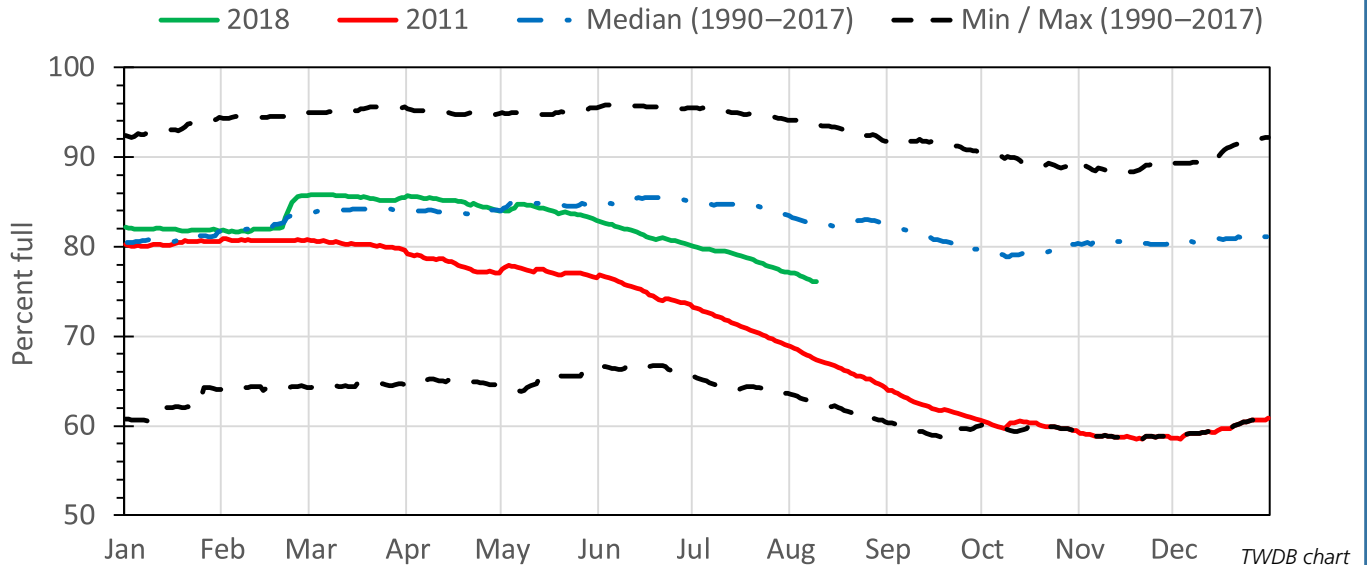
## Drought conditions

- ◆ 64% now
- ◆ 59% a week ago
- ◆ 39% three months ago
- ◆ 4% a year ago



## Statewide reservoir storage

Statewide water supply storage is currently 76 percent of capacity, more than 6 percentage points lower than normal for this time of year. That's still more than 8 percentage points better than in 2011, the most intense one-year drought in more than a century.



Written by Dr. Mark Wentzel — Dr. Mark Wentzel is a hydrologist in the TWDB's Office of Water Science and Conservation.

Bryan McMath, Governmental Relations | bryan.mcmath@twdb.texas.gov | 512-463-7850  
 Kimberly Leggett, Media Relations | kimberly.leggett@twdb.texas.gov | 512-463-5129