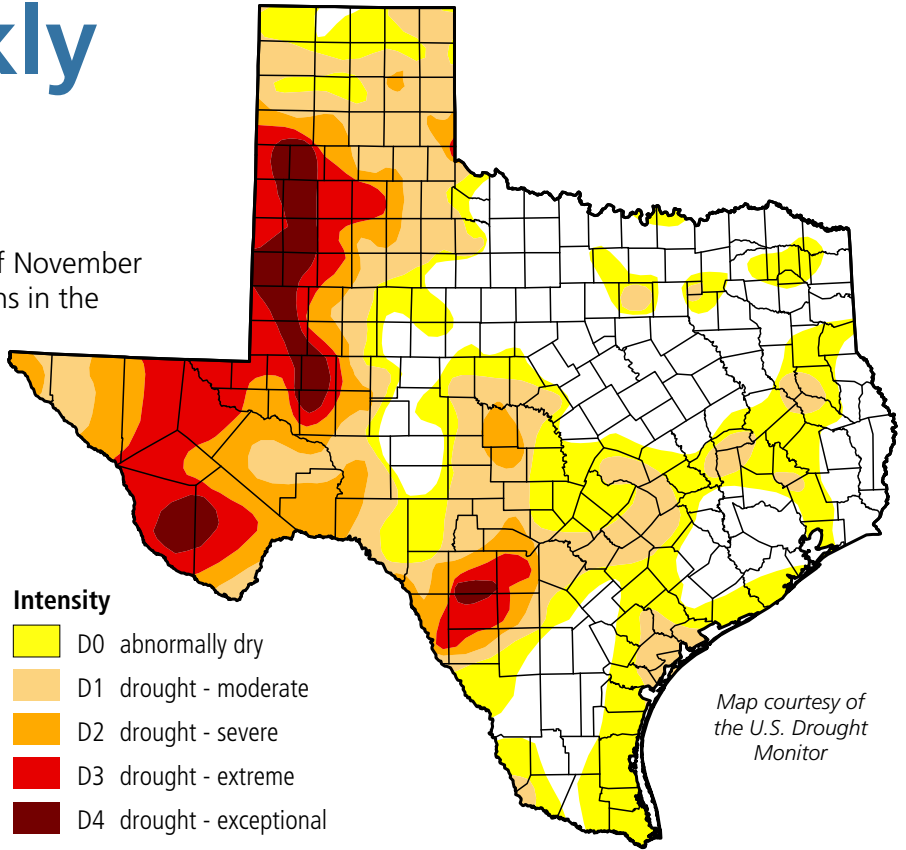


# Water Weekly

For the week of 11/09/20

## Water conditions

The latest drought map for conditions as of November 3 shows improvement of drought conditions in the Panhandle but continued expansion of drought across Central and East Texas. About one-fifth of the state is abnormally dry and considered vulnerable to drought expansion in coming weeks.



Map courtesy of the U.S. Drought Monitor

## Drought conditions

- ◆ 46% now
- ◆ 43% a week ago
- ◆ 33% three months ago
- ◆ 41% a year ago

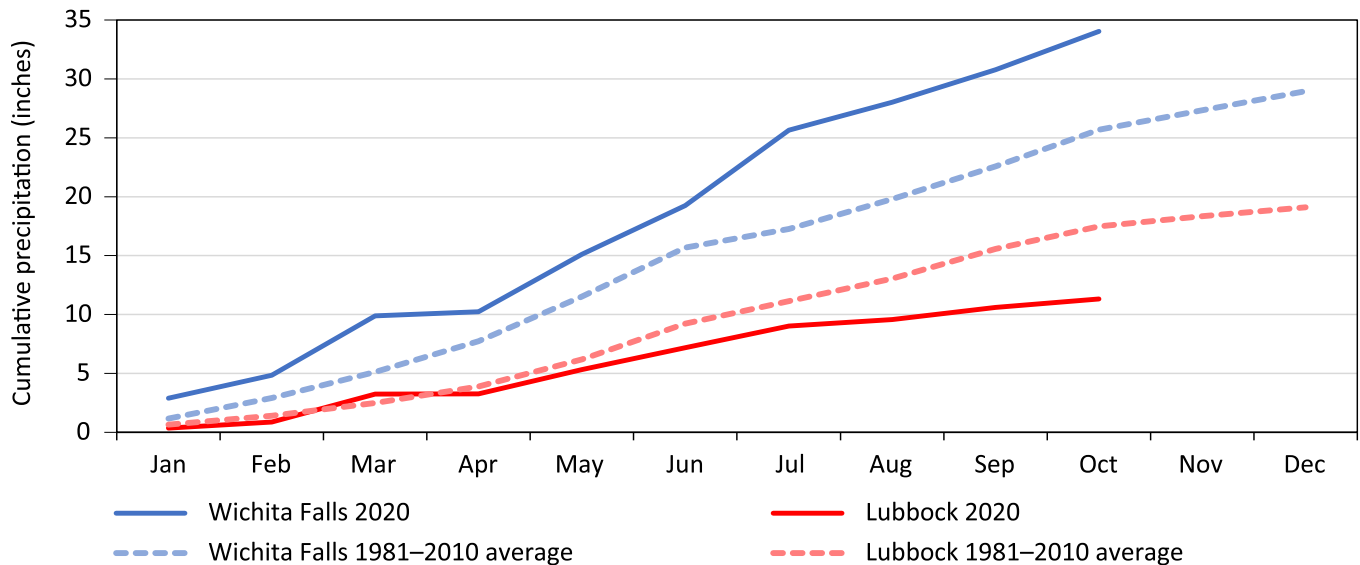
### Intensity

- ◆ D0 abnormally dry
- ◆ D1 drought - moderate
- ◆ D2 drought - severe
- ◆ D3 drought - extreme
- ◆ D4 drought - exceptional

## Wichita Falls and Lubbock precipitation

Data courtesy of NOAA

Rainfall in Texas is highly variable, and 2020 has been no exception. In the first 10 months of this year, Wichita Falls received 8 inches more precipitation than average. Meanwhile, 200 miles to the west, Lubbock received 6 inches less than average for the same time period.



Written by Dr. Mark Wentzel — Dr. Mark Wentzel is a hydrologist in the TWDB's Office of Water Science and Conservation.

Bryan McMath, Governmental Relations | bryan.mcmath@twdb.texas.gov | 512-463-7850  
 Sarah Haney, Media Relations | sarah.haney@twdb.texas.gov | 512-463-5129