

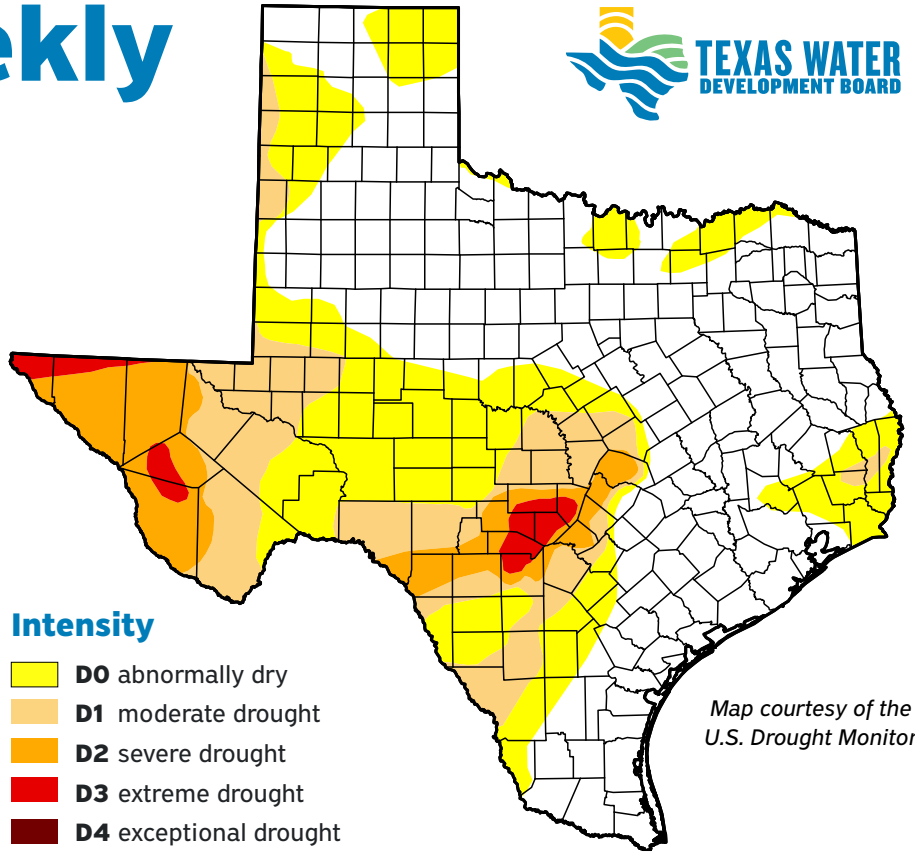
Water Weekly

For the week of 03/18/24



Water conditions

The latest drought map for conditions as of March 12 shows an increase in the area of the state impacted by drought, the second consecutive week that drought has increased. For the first time in a month, drought has re-emerged in a small area of East Texas.



Map courtesy of the U.S. Drought Monitor

Drought conditions

- 24%** now
- 23%** a week ago
- 44%** three months ago
- 65%** a year ago

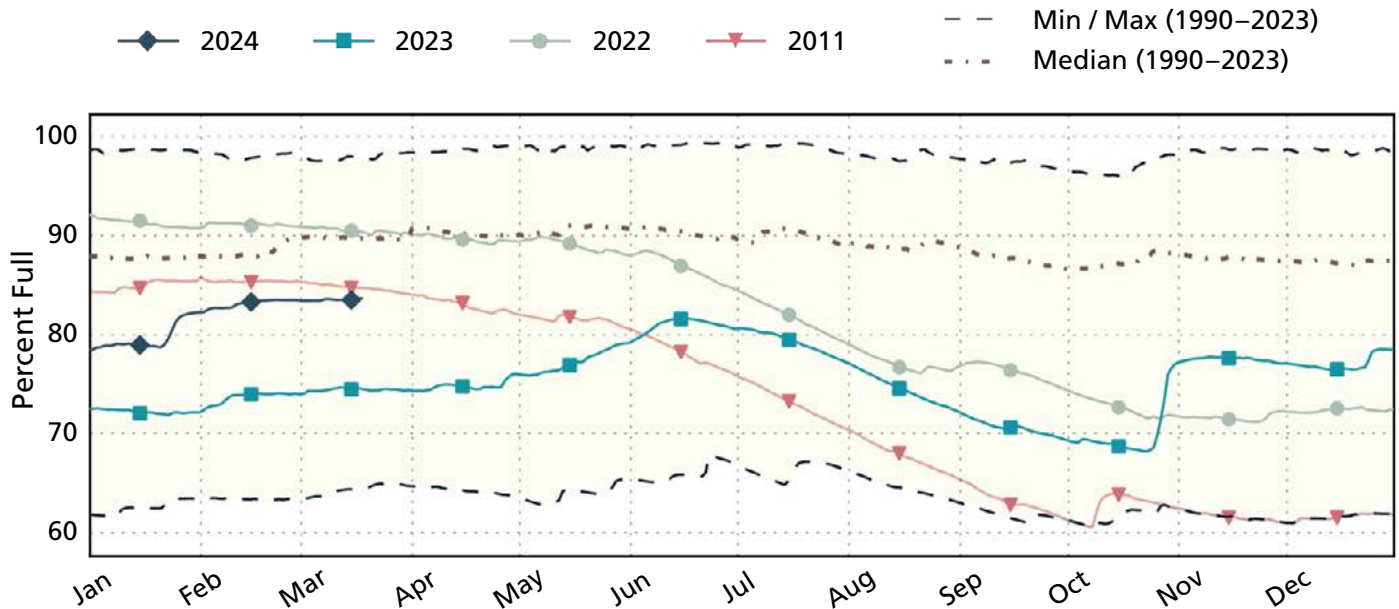
Intensity

- **D0** abnormally dry
- **D1** moderate drought
- **D2** severe drought
- **D3** extreme drought
- **D4** exceptional drought

TWDB chart

Brazos River Basin storage

Water supply storage in the Brazos River Basin is within seven percentage points of normal for the time of year and trending in the right direction. Conditions in the Colorado River Basin, the next basin to the south, are almost 30 percentage points below normal for the time of year.



By Dr. Mark Wentzel, Hydrologist, Office of Water Science and Conservation

Kellen McMurry, Government Relations | Kellen.McMurry@twdb.texas.gov | 512-475-1589
Media Relations | MediaRelations@twdb.texas.gov | 512-463-5129

www.twdb.texas.gov

