

Water Weekly

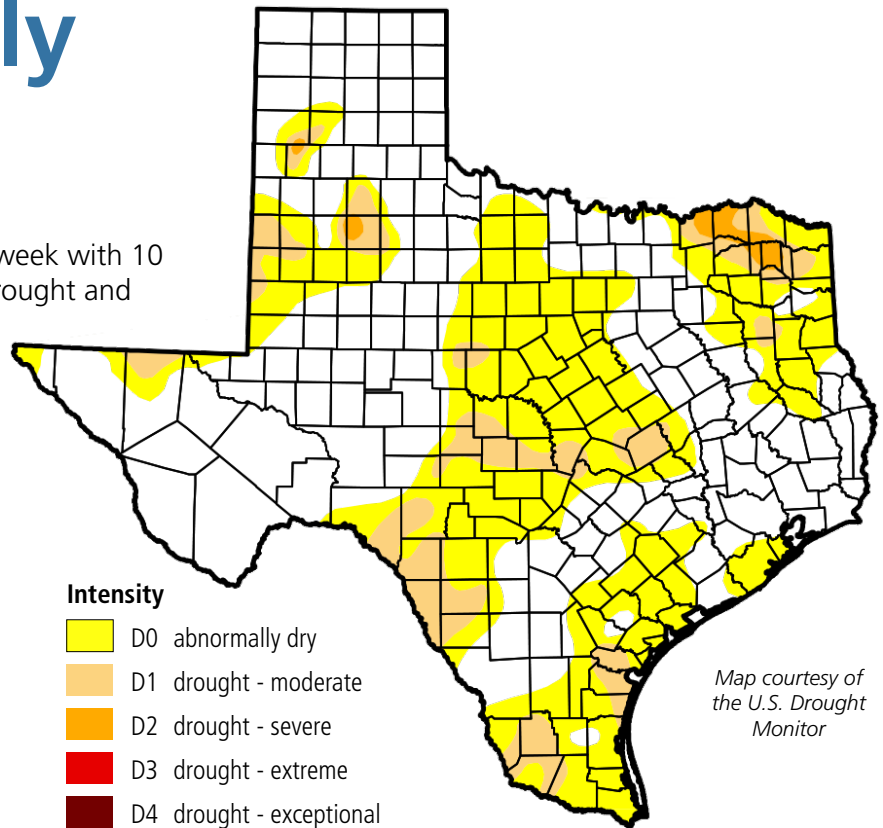
For the week of 08/15/16

Water conditions

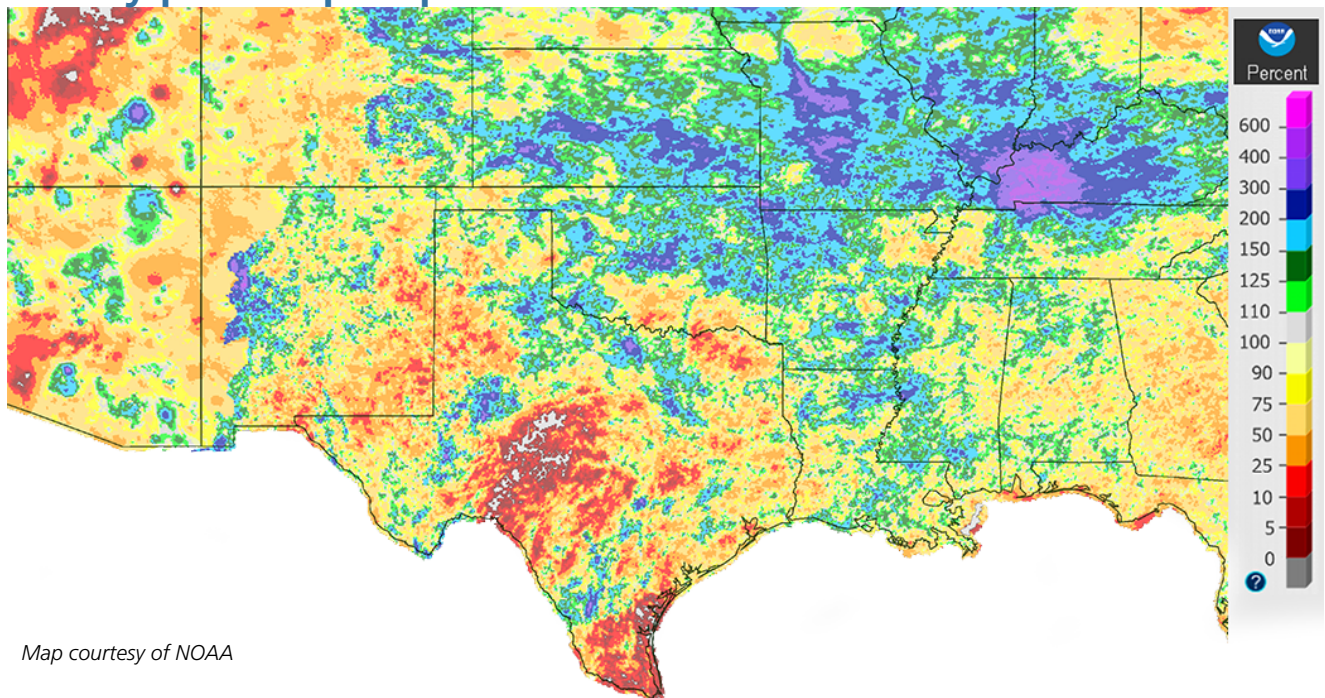
Drought continued to expand over the past week with 10 percent of the state in moderate to severe drought and an additional 34 percent of the state abnormally dry. July rainfall for many parts of the state—especially West, South, Central, and Northeast Texas—was less than 25 percent of normal amounts.

Drought conditions

- ◆ 10% now
- ◆ 6% a week ago
- ◆ 1% three months ago
- ◆ 18% a year ago



Monthly percent precipitation



Written by Dr. Robert Mace — Dr. Robert Mace is the TWDB Deputy Executive Administrator for Water Science and Conservation. Robert has a B.S. in Geophysics, an M.S. in Hydrology, and a Ph.D. in Hydrogeology. He has been at TWDB since 1999.

Tulsi Oberbeck, Governmental Relations | tulsi.oberbeck@twdb.texas.gov | 512-463-4864
Kimberly Leggett, Media Relations | kimberly.leggett@twdb.texas.gov | 512-463-5129